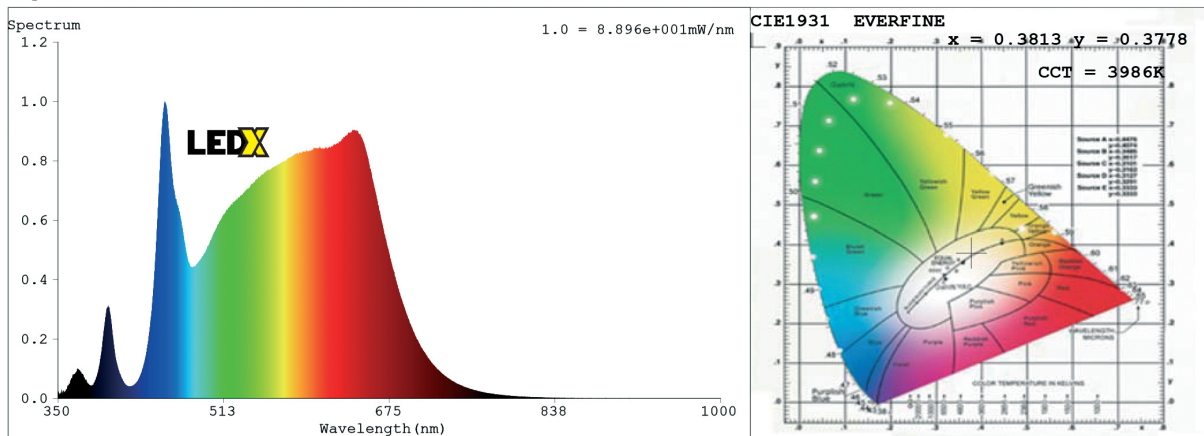


Light spectrum

a 50 watt LEDX Bird light - with UVA component
from 360-720nm

90° beam angle

Spectrum



Colorimetric Parameters

Chromaticity Coordinate: $x = 0.3813$ $y = 0.3778$ / $u' = 0.2252$ $v' = 0.5022$ ($duv=2.61e-04$)

CCT= 3986K Prcp WL: $L_d=579.0nm$ Purity=27.8%

Peak WL: $L_p=455nm$ FWHM: =29.4nm Ratio:R=19.9% G=75.4% B=4.7%

Render Index: $R_a = 95.3$

R1 =96 R2 =99 R3 =99 R4 =93 R5 =94 R6 =96 R7 =94

R8 =91 R9 =83 R10=96 R11=94 R12=73 R13=97 R14=99 R15=94

Photometric & Radiometric Parameters

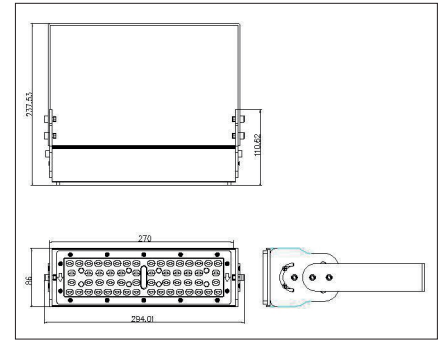
Flux = 4829.0 lm Eff. : 79.94 lm/W $F_e = 17.024 W$

Photons1: $1.360e+001$ $\mu mol/s(400\sim 500nm)$ Photons2: $3.261e+001$ $\mu mol/s(600\sim 700nm)$

Photosynthetic: PPF: $76.37 \mu mol/s$ PAR WATT: $16127mW(400-700nm)$

Electrical parameters

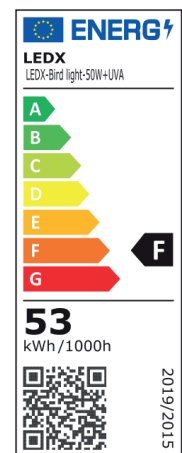
V = 220.2 V I = 0.2771 A P = 60.41 W PF = 0.9900 F=49.99 Hz



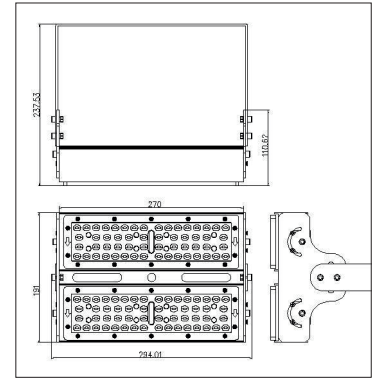
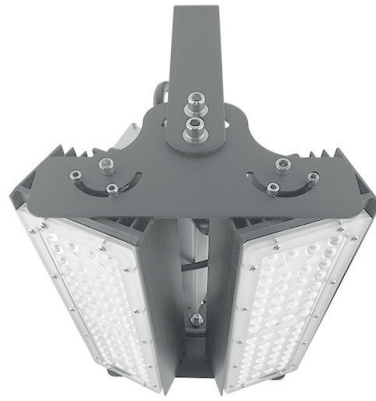
DATA SHEET

LEDX BIRD LIGHT 50 watts including power adapter

Item number	LEDX-Bird light-50W+UVA
LED Type	SMD
LED Power adapter	Meanwell or equivalent
LED Power	50 watt
Voltage	AC90-305V
Frequency	50/60 Hz
Light color	4000 Kelvin
Beam angle	15° / 40° / 60° or 90°
Ambient temperature	-40° to +50° C
Luminous flux	5250 Lumens
Colour reproduction	CRI 95
Power Factor	≥ 0,90
Switching resistance	> 100000
Start-up time	1 second
Ingress Protection	IP66
Protection class	I
Impact resistance	IK 08
Weight	2,45 kg
Dimensions	L278 x W86 x H230mm
Material	Aluminum, PMMA, Stainless Steel
Dimming	not dimmable dimmable optional: 0-10V, DALI or Zigbee
Others	incl. 2 meter connection with EU plug (EU plug IP20, only for test) Housing color gray/silver
Energy efficiency	F
Lifespan	L70/B20 at 20000 hours
Certificates	CE, RoHS



Our general terms and conditions apply. See also www.ledx.at.
A deviation of the technical data of +/-10% is possible. Misprints and errors excepted.
Product pictures are exemplary and may deviate from the original.
We reserve the right to make formal and technical changes.



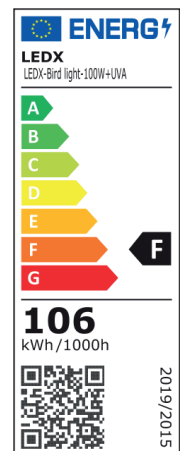
DATA SHEET

LEDX BIRD LIGHT

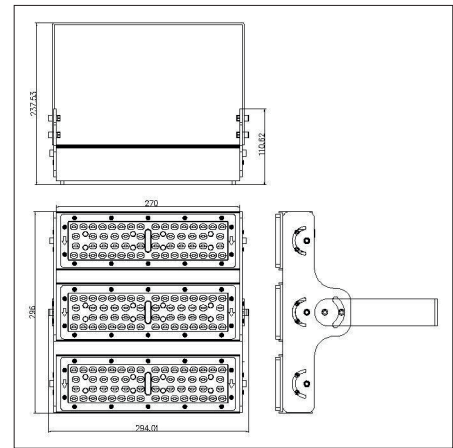
100 watts

including power adapter

Item number	LEDX-Bird light-100W+UVA
LED Type	SMD
LED Power adapter	Meanwell or equivalent
LED Power	100 watt
Voltage	AC90-305V
Frequency	50/60 Hz
Light color	4000 Kelvin
Beam angle	15° / 40° / 60° or 90°
Ambient temperature	-40° to +50° C
Luminous flux	10500 Lumens
Colour reproduction	CRI 95
Power Factor	≥ 0,90
Switching resistance	> 100000
Start-up time	1 second
Ingress Protection	IP66
Protection class	I
Impact resistance	IK 08
Weight	3,95 kg
Dimensions	L278 x W191 x H230mm
Material	Aluminum, PMMA, Stainless Steel
Dimming	not dimmable dimmable optional: 0-10V, DALI or Zigbee
Others	incl. 2 meter connection with EU plug (EU plug IP20, only for test) Housing color gray/silver
Energy efficiency	F
Lifespan	L70/B20 at 20000 hours
Certificates	CE, RoHS



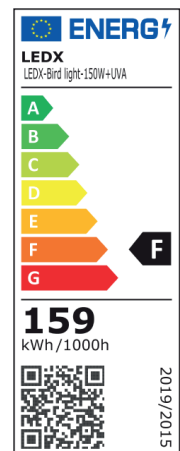
Our general terms and conditions apply. See also www.ledx.at.
 A deviation of the technical data of +/-10% is possible. Misprints and errors excepted.
 Product pictures are exemplary and may deviate from the original.
 We reserve the right to make formal and technical changes.



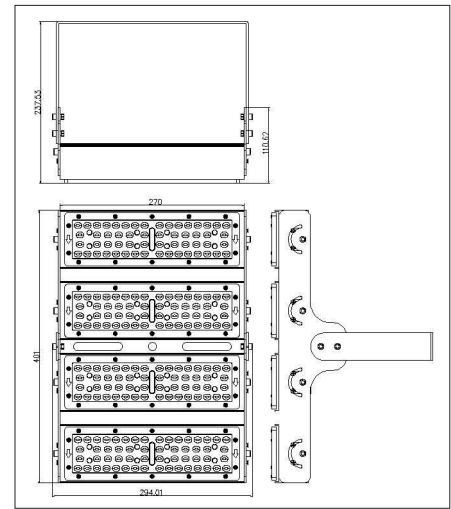
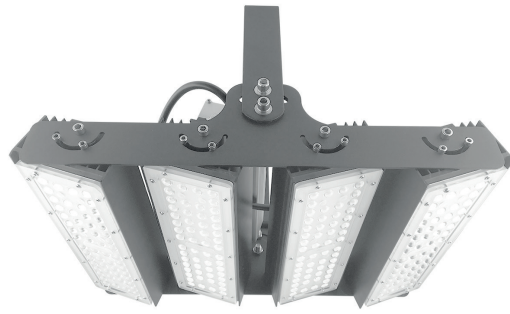
DATA SHEET

LEDX BIRD LIGHT 150 watts including power adapter

Item number	LEDX-Bird light-150W+UVA
LED Type	SMD
LED Power adapter	Meanwell or equivalent
LED Power	150 watt
Voltage	AC90-305V
Frequency	50/60 Hz
Light color	4000 Kelvin
Beam angle	15° / 40° / 60° or 90°
Ambient temperature	-40° to +50° C
Luminous flux	15600 Lumens
Colour reproduction	CRI 95
Power Factor	≥ 0,90
Switching resistance	> 100000
Start-up time	1 second
Ingress Protection	IP66
Protection class	I
Impact resistance	IK 08
Weight	5,35 kg
Dimensions	L278 x W296 x H230mm
Material	Aluminum, PMMA, Stainless Steel
Dimming	not dimmable dimmable optional: 0-10V, DALI or Zigbee
Others	incl. 2 meter connection with EU plug (EU plug IP20, only for test) Housing color gray/silver
Energy efficiency	F
Lifespan	L70/B20 at 20000 hours
Certificates	CE, RoHS



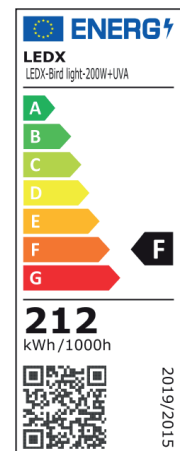
Our general terms and conditions apply. See also www.ledx.at.
A deviation of the technical data of +/-10% is possible. Misprints and errors excepted.
Product pictures are exemplary and may deviate from the original.
We reserve the right to make formal and technical changes.



DATA SHEET

LEDX BIRD LIGHT 200 watts including power adapter

Item number	LEDX-Bird light-200W+UVA
LED Type	SMD
LED Power adapter	Meanwell or equivalent
LED Power	200 watt
Voltage	AC90-305V
Frequency	50/60 Hz
Light color	4000 Kelvin
Beam angle	15° / 40° / 60° or 90°
Ambient temperature	-40° to +50° C
Luminous flux	21000 Lumens
Colour reproduction	CRI 95
Power Factor	≥ 0,90
Switching resistance	> 100000
Start-up time	1 second
Ingress Protection	IP66
Protection class	I
Impact resistance	IK 08
Weight	6,85 kg
Dimensions	L278 x W401 x H230mm
Material	Aluminum, PMMA, Stainless Steel
Dimming	not dimmable dimmable optional: 0-10V, DALI or Zigbee
Others	incl. 2 meter connection with EU plug (EU plug IP20, only for test) Housing color gray/silver
Energy efficiency	F
Lifespan	L70/B20 at 20000 hours
Certificates	CE, RoHS



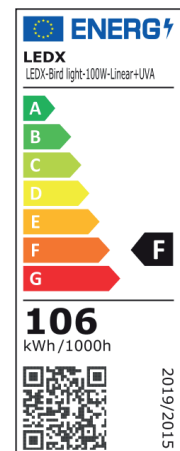
Our general terms and conditions apply. See also www.ledx.at.
A deviation of the technical data of +/-10% is possible. Misprints and errors excepted.
Product pictures are exemplary and may deviate from the original.
We reserve the right to make formal and technical changes.



DATA SHEET

LEDX BIRD LIGHT LINEAR 100 watts including power adapter

Item number	LEDX-Bird light-100W-Linear+UVA
LED Type	SMD
LED Power adapter	Meanwell or equivalent
LED Power	100 watt
Voltage	AC90-305V
Frequency	50/60 Hz
Light color	4000 Kelvin
Beam angle	15° / 40° / 60° or 90°
Ambient temperature	-40° to +50° C
Luminous flux	10500 Lumens
Colour reproduction	CRI 95
Power Factor	≥ 0,90
Switching resistance	> 100000
Start-up time	1 second
Ingress Protection	IP66
Protection class	I
Impact resistance	IK 08
Weight	3,95 kg
Dimensions	L556 x W86 x H230mm
Material	Aluminum, PMMA, Stainless Steel
Dimming	not dimmable dimmable optional: 0-10V, DALI or Zigbee
Others	incl. 2 meter connection with EU plug (EU plug IP20, only for test) Housing color gray/silver
Energy efficiency	F
Lifespan	L70/B20 at 20000 hours
Certificates	CE, RoHS



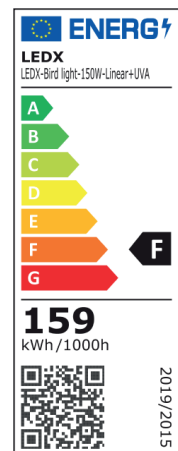
Our general terms and conditions apply. See also www.ledx.at.
A deviation of the technical data of +/-10% is possible. Misprints and errors excepted.
Product pictures are exemplary and may deviate from the original.
We reserve the right to make formal and technical changes.



DATA SHEET

LEDX BIRD LIGHT LINEAR 150 watts including power adapter

Item number	LEDX-Bird light-150W-Linear+UVA
LED Type	SMD
LED Power adapter	Meanwell or equivalent
LED Power	150 watt
Voltage	AC90-305V
Frequency	50/60 Hz
Light color	4000 Kelvin
Beam angle	15° / 40° / 60° or 90°
Ambient temperature	-40° to +50° C
Luminous flux	15600 Lumens
Colour reproduction	CRI 95
Power Factor	≥ 0,90
Switching resistance	> 100000
Start-up time	1 second
Ingress Protection	IP66
Protection class	I
Impact resistance	IK 08
Weight	5,35 kg
Dimensions	L834 x W86 x H230mm
Material	Aluminum, PMMA, Stainless Steel
Dimming	not dimmable dimmable optional: 0-10V, DALI or Zigbee
Others	incl. 2 meter connection with EU plug (EU plug IP20, only for test) Housing color gray/silver
Energy efficiency	F
Lifespan	L70/B20 at 20000 hours
Certificates	CE, RoHS



Our general terms and conditions apply. See also www.ledx.at.
A deviation of the technical data of +/-10% is possible. Misprints and errors excepted.
Product pictures are exemplary and may deviate from the original.
We reserve the right to make formal and technical changes.