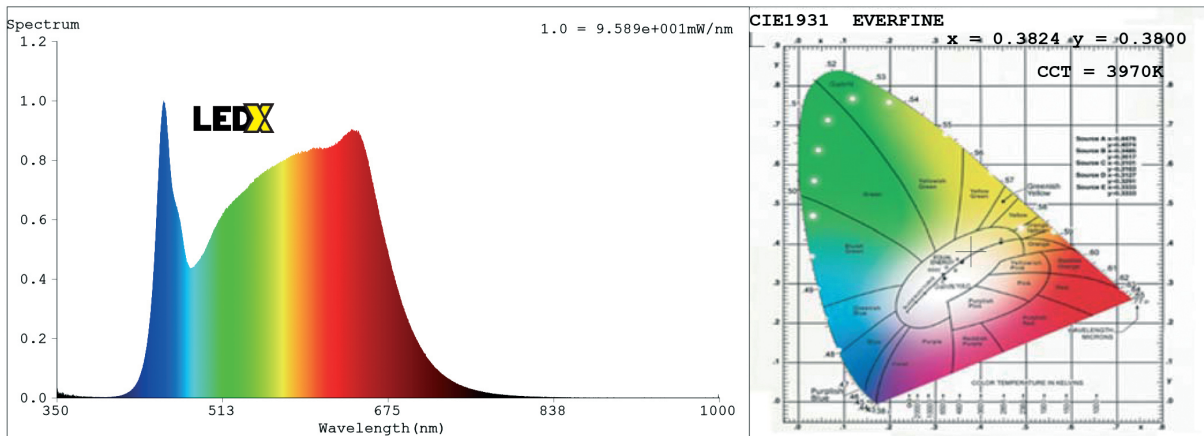


Light spectrum

a 50 watt LEDX Day light
from 400-720nm

90° beam angle

Spectrum



Colorimetric Parameters

Chromaticity Coordinate: $x = 0.3824$ $y = 0.3800$ / $u' = 0.2251$ $v' = 0.5033$ ($duv=9.42e-04$)

CCT= 3970K Prcp WL: $L_d=578.7nm$ Purity=28.8%

Peak WL: $L_p=455nm$ FWHM: =29.0nm Ratio:R=19.9% G=75.5% B=4.6%

Render Index: $R_a = 95.0$

R1 =96 R2 =99 R3 =99 R4 =92 R5 =94 R6 =96 R7 =94

R8 =91 R9 =82 R10=96 R11=93 R12=72 R13=97 R14=99 R15=94

Photometric & Radiometric Parameters

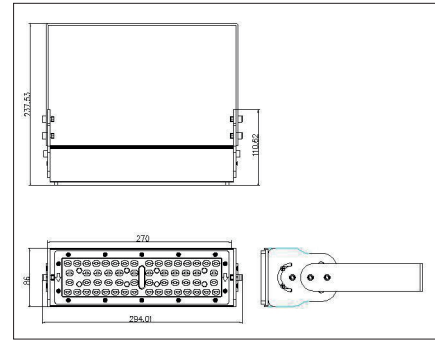
Flux = 5197.2 lm Eff. : 86.87 lm/W $F_e = 17.681 W$

Photons1: $1.374e+001$ $\mu mol/s(400\sim 500nm)$ Photons2: $3.516e+001$ $\mu mol/s(600\sim 700nm)$

Photosynthetic: PPF: $81.359\mu mol/s$ PAR WATT: $17108mW(400-700nm)$

Electrical parameters

V = 220.2 V I = 0.2745 A P = 59.83 W PF = 0.9898 F=49.99 Hz



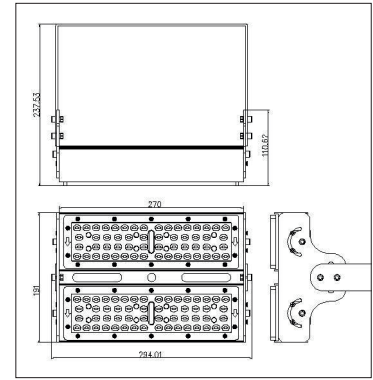
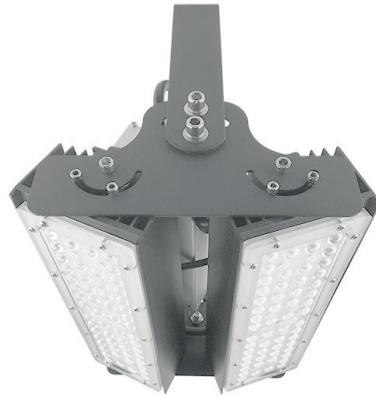
DATA SHEET

LEDX DAY LIGHT 50 watts including power adapter

Item number	LEDX-Day light-50W-4000K
LED Type	SMD
LED Power adapter	Meanwell or equivalent
LED Power	50 watt
Voltage	AC90-305V
Frequency	50/60 Hz
Light color	4000 Kelvin
Beam angle	15° / 40° / 60° or 90°
Ambient temperature	-40° to +50° C
Luminous flux	6000 Lumens
Colour reproduction	CRI 95
Power Factor	≥ 0,90
Switching resistance	> 100000
Start-up time	1 second
Ingress Protection	IP66
Protection class	I
Impact resistance	IK 08
Weight	2,45 kg
Dimensions	L278 x W86 x H230mm
Material	Aluminum, PMMA, Stainless Steel
Dimming	not dimmable dimmable optional: 0-10V, DALI or Zigbee
Others	incl. 2 meter connection with EU plug (EU plug IP20, only for test) Housing color gray/silver
Energy efficiency	E
Lifespan	L80/B20 at 50000 hours
Certificates	CE, RoHS



Our general terms and conditions apply. See also www.ledx.at.
A deviation of the technical data of +/-10% is possible. Misprints and errors excepted.
Product pictures are exemplary and may deviate from the original.
We reserve the right to make formal and technical changes.



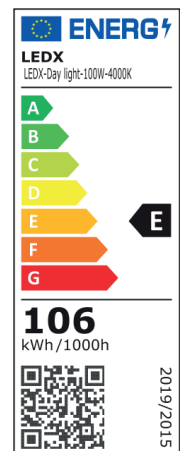
DATA SHEET

LEDX DAY LIGHT

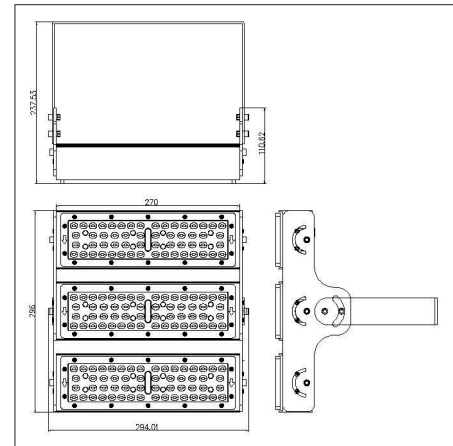
100 watts

including power adapter

Item number	LEDX-Day light-100W-4000K
LED Type	SMD
LED Power adapter	Meanwell or equivalent
LED Power	100 watt
Voltage	AC90-305V
Frequency	50/60 Hz
Light color	4000 Kelvin
Beam angle	15° / 40° / 60° or 90°
Ambient temperature	-40° to +50° C
Luminous flux	12000 Lumens
Colour reproduction	CRI 95
Power Factor	≥ 0,90
Switching resistance	> 100000
Start-up time	1 second
Ingress Protection	IP66
Protection class	I
Impact resistance	IK 08
Weight	3,95 kg
Dimensions	L278 x W191 x H230mm
Material	Aluminum, PMMA, Stainless Steel
Dimming	not dimmable dimmable optional: 0-10V, DALI or Zigbee
Others	incl. 2 meter connection with EU plug (EU plug IP20, only for test) Housing color gray/silver
Energy efficiency	E
Lifespan	L80/B20 at 50000 hours
Certificates	CE, RoHS



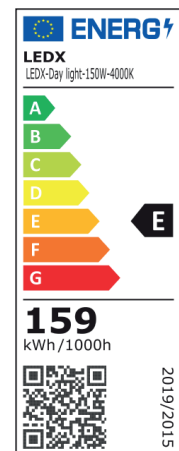
Our general terms and conditions apply. See also www.ledx.at.
A deviation of the technical data of +/-10% is possible. Misprints and errors excepted.
Product pictures are exemplary and may deviate from the original.
We reserve the right to make formal and technical changes.



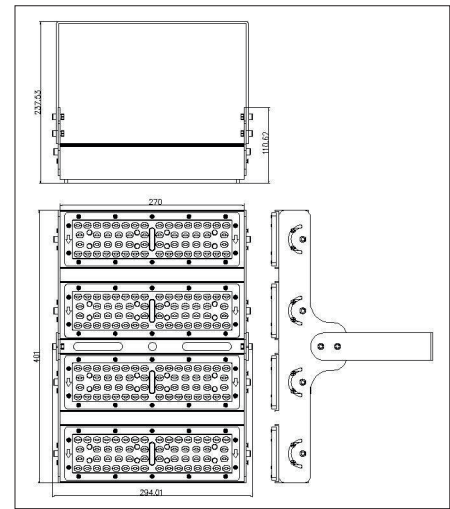
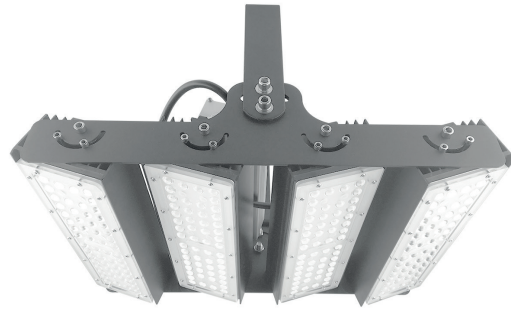
DATA SHEET

LEDX DAY LIGHT 150 watts including power adapter

Item number	LEDX-Day light-150W-4000K
LED Type	SMD
LED Power adapter	Meanwell or equivalent
LED Power	150 watt
Voltage	AC90-305V
Frequency	50/60 Hz
Light color	4000 Kelvin
Beam angle	15° / 40° / 60° or 90°
Ambient temperature	-40° to +50° C
Luminous flux	18000 Lumens
Colour reproduction	CRI 95
Power Factor	≥ 0,90
Switching resistance	> 100000
Start-up time	1 second
Ingress Protection	IP66
Protection class	I
Impact resistance	IK 08
Weight	5,35 kg
Dimensions	L278 x W296 x H230mm
Material	Aluminum, PMMA, Stainless Steel
Dimming	not dimmable dimmable optional: 0-10V, DALI or Zigbee
Others	incl. 2 meter connection with EU plug (EU plug IP20, only for test) Housing color gray/silver
Energy efficiency	E
Lifespan	L80/B20 at 50000 hours
Certificates	CE, RoHS



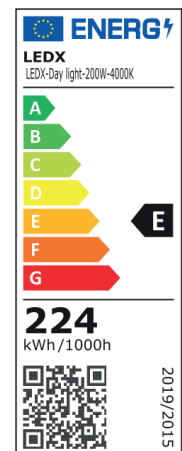
Our general terms and conditions apply. See also www.ledx.at.
A deviation of the technical data of +/-10% is possible. Misprints and errors excepted.
Product pictures are exemplary and may deviate from the original.
We reserve the right to make formal and technical changes.



DATA SHEET

LEDX DAY LIGHT 200 watts including power adapter

Item number	LEDX-Day light-200W-4000K
LED Type	SMD
LED Power adapter	Meanwell or equivalent
LED Power	200 watt
Voltage	AC90-305V
Frequency	50/60 Hz
Light color	4000 Kelvin
Beam angle	15° / 40° / 60° or 90°
Ambient temperature	-40° to +50° C
Luminous flux	24000 Lumens
Colour reproduction	CRI 95
Power Factor	≥ 0,90
Switching resistance	> 100000
Start-up time	1 second
Ingress Protection	IP66
Protection class	I
Impact resistance	IK 08
Weight	6,85 kg
Dimensions	L278 x W401 x H230mm
Material	Aluminum, PMMA, Stainless Steel
Dimming	not dimmable dimmable optional: 0-10V, DALI or Zigbee
Others	incl. 2 meter connection with EU plug (EU plug IP20, only for test) Housing color gray/silver
Energy efficiency	E
Lifespan	L80/B20 at 50000 hours
Certificates	CE, RoHS



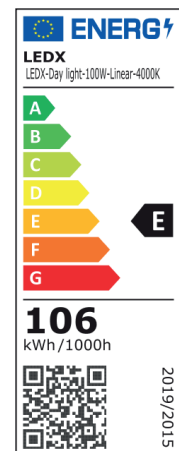
Our general terms and conditions apply. See also www.ledx.at.
A deviation of the technical data of +/-10% is possible. Misprints and errors excepted.
Product pictures are exemplary and may deviate from the original.
We reserve the right to make formal and technical changes.



DATA SHEET

LEDX DAY LIGHT LINEAR 100 watts including power adapter

Item number	LEDX-Day light-100W-Linear-4000K
LED Type	SMD
LED Power adapter	Meanwell or equivalent
LED Power	100 watt
Voltage	AC90-305V
Frequency	50/60 Hz
Light color	4000 Kelvin
Beam angle	15° / 40° / 60° or 90°
Ambient temperature	-40° to +50° C
Luminous flux	12000 Lumens
Colour reproduction	CRI 95
Power Factor	≥ 0,90
Switching resistance	> 100000
Start-up time	1 second
Ingress Protection	IP66
Protection class	I
Impact resistance	IK 08
Weight	3,95 kg
Dimensions	L556 x W86 x H230mm
Material	Aluminum, PMMA, Stainless Steel
Dimming	not dimmable dimmable optional: 0-10V, DALI or Zigbee
Others	incl. 2 meter connection with EU plug (EU plug IP20, only for test) Housing color gray/silver
Energy efficiency	E
Lifespan	L80/B20 at 50000 hours
Certificates	CE, RoHS



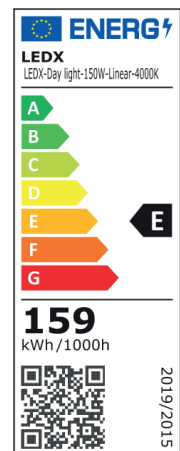
Our general terms and conditions apply. See also www.ledx.at.
A deviation of the technical data of +/-10% is possible. Misprints and errors excepted.
Product pictures are exemplary and may deviate from the original.
We reserve the right to make formal and technical changes.



DATA SHEET

LEDX DAY LIGHT LINEAR 150 watts including power adapter

Item number	LEDX-Day light-150W-Linear-4000K
LED Type	SMD
LED Power adapter	Meanwell or equivalent
LED Power	150 watt
Voltage	AC90-305V
Frequency	50/60 Hz
Light color	4000 Kelvin
Beam angle	15° / 40° / 60° or 90°
Ambient temperature	-40° to +50° C
Luminous flux	18000 Lumens
Colour reproduction	CRI 95
Power Factor	≥ 0,90
Switching resistance	> 100000
Start-up time	1 second
Ingress Protection	IP66
Protection class	I
Impact resistance	IK 08
Weight	5,35 kg
Dimensions	L834 x W86 x H230mm
Material	Aluminum, PMMA, Stainless Steel
Dimming	not dimmable dimmable optional: 0-10V, DALI or Zigbee
Others	incl. 2 meter connection with EU plug (EU plug IP20, only for test) Housing color gray/silver
Energy efficiency	E
Lifespan	L80/B20 at 50000 hours
Certificates	CE, RoHS



Our general terms and conditions apply. See also www.ledx.at.
A deviation of the technical data of +/-10% is possible. Misprints and errors excepted.
Product pictures are exemplary and may deviate from the original.
We reserve the right to make formal and technical changes.