

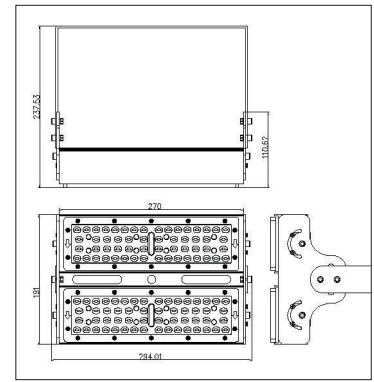
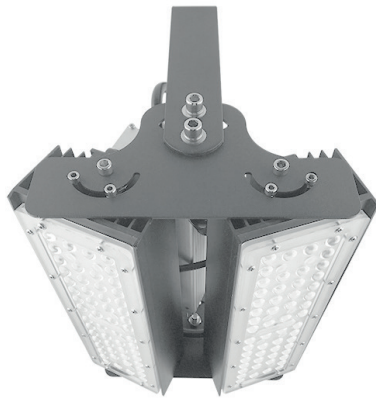
DATA SHEET

LEDX CORAL LIGHT G1 50 watts including power adapter

Item number	LEDX-Coral light-50W-G1
LED Type	SMD
LED Power adapter	Meanwell or equivalent
LED Power	50 watt
Voltage	AC90-305V
Frequency	50/60 Hz
Light color	10000 Kelvin
Beam angle	15° / 40° / 60° or 90°
Ambient temperature	-40° to +50° C
Luminous flux	5250 Lumens
Colour reproduction	CRI 75
Power Factor	≥ 0,90
Switching resistance	> 100000
Start-up time	1 second
Ingress Protection	IP66
Protection class	I
Impact resistance	IK 08
Weight	2,45 kg
Dimensions	L278 x W86 x H230mm
Material	Aluminum, PMMA, Stainless Steel
Dimming	not dimmable dimmable optional: 0-10V, DALI or Zigbee
Others	incl. 2 meter connection with EU plug (EU plug IP20, only for test) Housing color gray/silver
Energy efficiency	E
Lifespan	L70/B20 at 30000 hours
Certificates	CE, RoHS



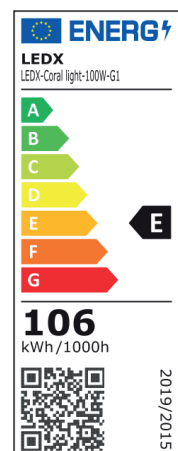
Our general terms and conditions apply. See also www.ledx.at.
A deviation of the technical data of +/-10% is possible. Misprints and errors excepted.
Product pictures are exemplary and may deviate from the original.
We reserve the right to make formal and technical changes.



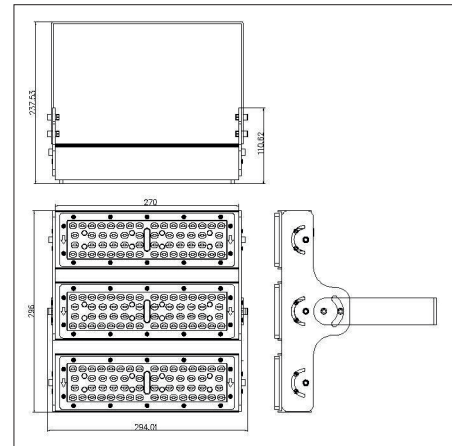
DATA SHEET

LEDX CORAL LIGHT G1 100 watts including power adapter

Item number	LEDX-Coral light-100W-G1
LED Type	SMD
LED Power adapter	Meanwell or equivalent
LED Power	100 watt
Voltage	AC90-305V
Frequency	50/60 Hz
Light color	10000 Kelvin
Beam angle	15° / 40° / 60° or 90°
Ambient temperature	-40° to +50° C
Luminous flux	10500 Lumens
Colour reproduction	CRI 75
Power Factor	≥ 0,90
Switching resistance	> 100000
Start-up time	1 second
Ingress Protection	IP66
Protection class	I
Impact resistance	IK 08
Weight	3,95 kg
Dimensions	L278 x W191 x H230mm
Material	Aluminum, PMMA, Stainless Steel
Dimming	not dimmable dimmable optional: 0-10V, DALI or Zigbee
Others	incl. 2 meter connection with EU plug (EU plug IP20, only for test) Housing color gray/silver
Energy efficiency	E
Lifespan	L70/B20 at 30000 hours
Certificates	CE, RoHS



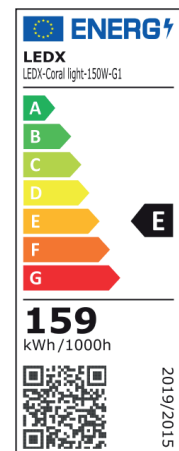
Our general terms and conditions apply. See also www.ledx.at.
A deviation of the technical data of +/-10% is possible. Misprints and errors excepted.
Product pictures are exemplary and may deviate from the original.
We reserve the right to make formal and technical changes.



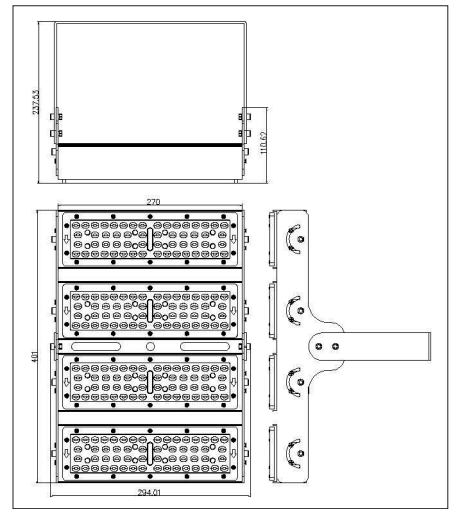
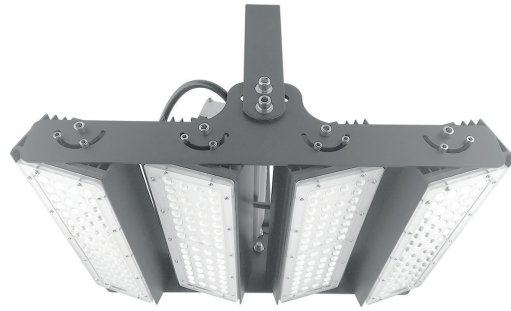
DATA SHEET

LEDX CORAL LIGHT G1 150 watts including power adapter

Item number	LEDX-Coral light-150W-G1
LED Type	SMD
LED Power adapter	Meanwell or equivalent
LED Power	150 watt
Voltage	AC90-305V
Frequency	50/60 Hz
Light color	10000 Kelvin
Beam angle	15° / 40° / 60° or 90°
Ambient temperature	-40° to +50° C
Luminous flux	15600 Lumens
Colour reproduction	CRI 75
Power Factor	≥ 0,90
Switching resistance	> 100000
Start-up time	1 second
Ingress Protection	IP66
Protection class	I
Impact resistance	IK 08
Weight	5,35 kg
Dimensions	L278 x W296 x H230mm
Material	Aluminum, PMMA, Stainless Steel
Dimming	not dimmable dimmable optional: 0-10V, DALI or Zigbee
Others	incl. 2 meter connection with EU plug (EU plug IP20, only for test) Housing color gray/silver
Energy efficiency	E
Lifespan	L70/B20 at 30000 hours
Certificates	CE, RoHS



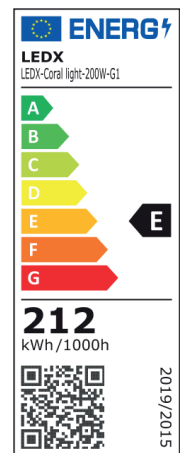
Our general terms and conditions apply. See also www.ledx.at.
A deviation of the technical data of +/-10% is possible. Misprints and errors excepted.
Product pictures are exemplary and may deviate from the original.
We reserve the right to make formal and technical changes.



DATA SHEET

LEDX CORAL LIGHT G1 200 watts including power adapter

Item number	LEDX-Coral light-200W-G1
LED Type	SMD
LED Power adapter	Meanwell or equivalent
LED Power	200 watt
Voltage	AC90-305V
Frequency	50/60 Hz
Light color	10000 Kelvin
Beam angle	15° / 40° / 60° or 90°
Ambient temperature	-40° to +50° C
Luminous flux	21000 Lumens
Colour reproduction	CRI 75
Power Factor	≥ 0,90
Switching resistance	> 100000
Start-up time	1 second
Ingress Protection	IP66
Protection class	I
Impact resistance	IK 08
Weight	6,85 kg
Dimensions	L278 x W401 x H230mm
Material	Aluminum, PMMA, Stainless Steel
Dimming	not dimmable dimmable optional: 0-10V, DALI or Zigbee
Others	incl. 2 meter connection with EU plug (EU plug IP20, only for test) Housing color gray/silver
Energy efficiency	E
Lifespan	L70/B20 at 30000 hours
Certificates	CE, RoHS



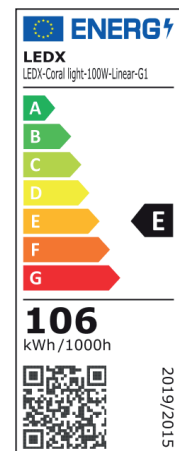
Our general terms and conditions apply. See also www.ledx.at.
A deviation of the technical data of +/-10% is possible. Misprints and errors excepted.
Product pictures are exemplary and may deviate from the original.
We reserve the right to make formal and technical changes.



DATA SHEET

LEDX CORAL LIGHT LINEAR G1 100 watts including power adapter

Item number	LEDX-Coral light-100W-Linear-G1
LED Type	SMD
LED Power adapter	Meanwell or equivalent
LED Power	100 watt
Voltage	AC90-305V
Frequency	50/60 Hz
Light color	10000 Kelvin
Beam angle	15° / 40° / 60° or 90°
Ambient temperature	-40° to +50° C
Luminous flux	10500 Lumens
Colour reproduction	CRI 75
Power Factor	≥ 0,90
Switching resistance	> 100000
Start-up time	1 second
Ingress Protection	IP66
Protection class	I
Impact resistance	IK 08
Weight	3,95 kg
Dimensions	L556 x W86 x H230mm
Material	Aluminum, PMMA, Stainless Steel
Dimming	not dimmable dimmable optional: 0-10V, DALI or Zigbee
Others	incl. 2 meter connection with EU plug (EU plug IP20, only for test) Housing color gray/silver
Energy efficiency	E
Lifespan	L70/B20 at 30000 hours
Certificates	CE, RoHS



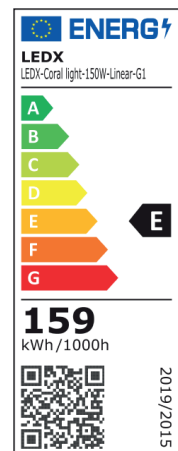
Our general terms and conditions apply. See also www.ledx.at.
A deviation of the technical data of +/-10% is possible. Misprints and errors excepted.
Product pictures are exemplary and may deviate from the original.
We reserve the right to make formal and technical changes.



DATA SHEET

LEDX CORAL LIGHT LINEAR G1 150 watts including power adapter

Item number	LEDX-Coral light-150W-Linear-G1
LED Type	SMD
LED Power adapter	Meanwell or equivalent
LED Power	150 watt
Voltage	AC90-305V
Frequency	50/60 Hz
Light color	10000 Kelvin
Beam angle	15° / 40° / 60° or 90°
Ambient temperature	-40° to +50° C
Luminous flux	15600 Lumens
Colour reproduction	CRI 75
Power Factor	≥ 0,90
Switching resistance	> 100000
Start-up time	1 second
Ingress Protection	IP66
Protection class	I
Impact resistance	IK 08
Weight	5,35 kg
Dimensions	L834 x W86 x H230mm
Material	Aluminum, PMMA, Stainless Steel
Dimming	not dimmable dimmable optional: 0-10V, DALI or Zigbee
Others	incl. 2 meter connection with EU plug (EU plug IP20, only for test) Housing color gray/silver
Energy efficiency	E
Lifespan	L70/B20 at 30000 hours
Certificates	CE, RoHS



Our general terms and conditions apply. See also www.ledx.at.
A deviation of the technical data of +/-10% is possible. Misprints and errors excepted.
Product pictures are exemplary and may deviate from the original.
We reserve the right to make formal and technical changes.